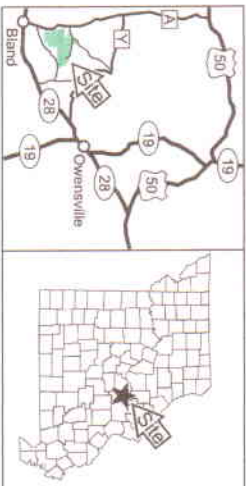
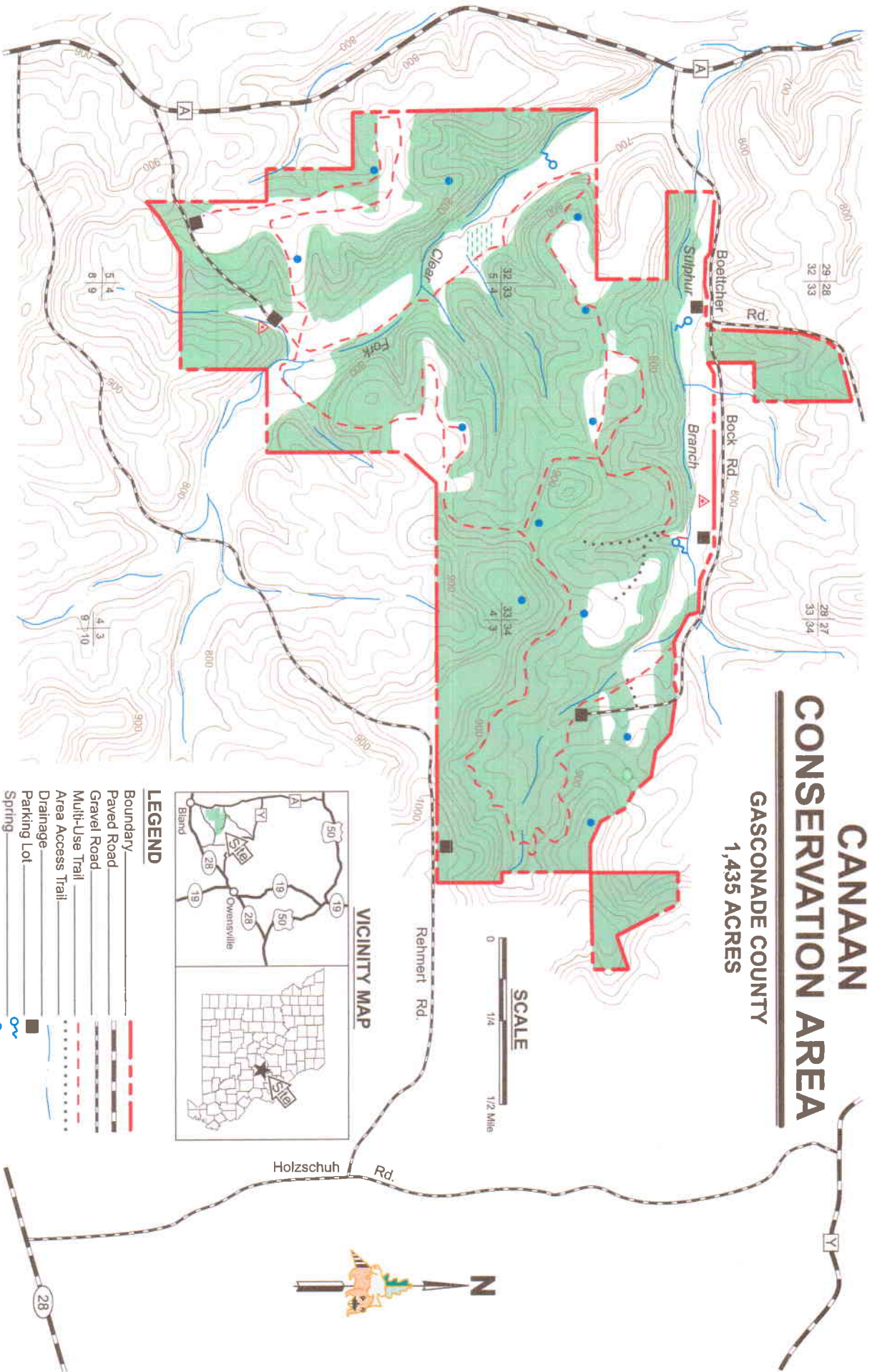


CANAAN CONSERVATION AREA








GASCONADE COUNTY
1,435 ACRES



- LEGEND**
- Boundary ————
 - Paved Road ————
 - Gravel Road ————
 - Multi-Use Trail ————
 - Area Access Trail ————
 - Drainage ————
 - Parking Lot —■
 - Spring —●
 - Wildlife Water Hole —▲
 - Primitive Camping Area —■
 - Fen —■
 - Forest —■
 - Topography —■

COOPER HILL CONSERVATION AREA

OSAGE COUNTY
214 ACRES

- LEGEND**
- Boundary 
 - Paved Road 
 - Gravel Road 
 - Drainage 
 - Area Access Trail 
 - Parking Lot 
 - Pond 
 - Primitive Camping Area 
 - Forest 
 - Topography 